

2020

44<sup>TH</sup> ANNUAL  
MID-AMERICA EMMY® AWARDS  
VIRTUAL GALA  
NOVEMBER 21, 2020



**CONGRATULATIONS TO ALL  
NOMINEES AND WINNERS!**

# *We Believe* **IT'S TIME FOR THE NEXT ACT TO BEGIN.**

In Branson, we believe in a few things.  
Like keeping the good times rolling.  
Branson. You won't believe it, until you do.

**Branson**  
MISSOURI  
★

ExploreBranson.com

877-BRANSON

44<sup>TH</sup> ANNUAL  
MID-AMERICA EMMY® AWARDS

## TABLE OF CONTENTS

A Message from the President	2
This Evening's Schedule	3
A Message from the Awards Co-Chairs	4
The Purpose of NATAS, Mission & Judging Procedures	6
2020 Board of Governors, Past Presidents and Awards Committee	7
This Evening's Presenters	8
A Message from the Gold and Silver Circle Chair	12
Scholarship Recipients	14
2020 Student Entry Winners	16
2020 EMMY® Award Nominees	19
Acknowledgements	49





## 44<sup>TH</sup> ANNUAL MID-AMERICA EMMY® AWARDS

### A MESSAGE FROM THE PRESIDENT

### THIS EVENING'S SCHEDULE



During my college years, a network radio newscaster wisely advised "take the classes that tell you how the world operates." That was it.

Fast forward to 2020. By the time a child reaches 8th grade, they have watched, read, or heard more information than their grandparents during their entire lifetime! Think about that. And think about this:

In 2016, only one in four 8th graders in the United States performed at or above proficiency on a nationwide civics exam. Stanford University Cyber Policy Center tracks disinformation and misinformation across platforms. As reported in the New Yorker magazine this fall, Stanford found when a particular meme has begun to travel from one online platform to the next, identifying its origins is often impossible. More important is how a targeted population acts in response.

The New Yorker's article also hails the tiny country of Finland as the world leader in teaching media literacy in public schools. They have upgraded national curriculum to teach all high school students to identify false stories and to make sense of which sources of information to trust.

Fortunately for us, one Missouri State Representative plans to re-introduce his media literacy legislation in the 2021 Session of the General Assembly.

It seems to parallel what Finland accomplishes. Republican Jim Murphy of St. Louis tells me his bill calls for developing a high school class that teaches verifying and evaluating information. It would be process-based and not content-based. Mr. Murphy says his proposal is designed to "allow everyone to exercise their own judgements (about) the information young people are exposed to".

The Mid-America Board of Governors is prepared to support getting media literacy to the Governor's desk this time around. And the Missouri Broadcasters Association and Missouri Press Association are planning to partner with us.

We hope you will too.

STEVE GRANT

## 7PM VIRTUAL EMMY GALA



DOWNLOAD THE **WATCH.THE EMMYS.TV** APP TO  
WATCH ON YOUR BIG SCREEN SMART TV

[HTTPS://WATCH.THEEMMYS.TV](https://watch.theemmys.tv)

**#EMMYMIDAM**

## A MESSAGE FROM OUR CO-CHAIRS



Dear Fellow Members of Emmy Mid-America,

Mid-America Emmy® night is finally here! This has been an unusually long Emmy® season for our chapter. The Board of Governors and Awards Committee appreciates your flexibility as we moved deadlines, delayed the Awards, and transitioned our in-person Gala into a virtual one. Of course, this is not how we want to celebrate and recognize great content and honor the talent behind it, but this is 2020 and the show must safely go on!

This year we had 842 submissions during our Call for Entry period. After being viewed and scored by peers from across the country, 340 nominations were announced in 91 categories. Thank you to all of you who took the time to judge other chapters this year. Without you and your professionalism, these awards would not be possible. If you haven't judged, please consider doing so. It's a great opportunity to see what is being produced in other markets.

Congratulations to all the Nominees!

Be well and stay safe.

**ANNE-MARIE BERGER**, SENIOR DIRECTOR OF CONTENT, NINE NETWORK

**SHEILA CONDON RICE**, 6PM PRODUCER, KSDK 5 ON YOUR SIDE

EMMY® MID-AMERICA AWARD CHAIRS



## TIPS FOR HOSTING AN EMMY® WATCH PARTY

The Mid-America Emmys® is not hosting an official watch party, but that doesn't mean you can't have your own!

Whatever online virtual gathering platform you choose, we suggest streaming the Gala from our website so that closed captioning is available and you can broadcast the show as it plays from the Chapter's strong signal:

[www.emmymid-america.org](http://www.emmymid-america.org)

Here are a couple of recommendations (but not the only options) for holding your very own virtual party.

1. Designate someone in your group who has great internet bandwidth to watch the stream from the Mid-America Emmy® website and have them share their screen in zoom (or other virtual platform).

OR

2. Instruct the watch party participants to use two devices. Download the Emmys® app on one and watch the show on a regular TV screen and use the second device to zoom with the group.

[Download the Emmys® app](#)

Good Luck Everyone!

**#EMMYMIDAM**





## THE PURPOSE OF NATAS

The National Academy of Television Arts & Sciences, Mid-America Chapter, is a not-for-profit organization devoted to fostering creative leadership in the television industry for artistic, cultural, educational and technological progress; promoting and engaging in study and research relating to all aspects of the television industry.

The Academy's goal is to raise industry standards and to encourage future generations of leaders, artists and craft persons always to reach for a higher level of excellence.

The Mid-America Chapter of the National Academy of Television Arts & Sciences awards the regional EMMY® to recognize outstanding achievements, encourage the continuing pursuit of excellence within the industry and promote the highest standards of quality by focusing public attention upon professional, technical and personal accomplishments in the arts and sciences of television and advanced media.

## MISSION STATEMENT

We are the Emmy People. Setting The Gold Standard while Celebrating Innovation and Integrity across all platforms of visual media...Dedicated to Advancing Careers and Promoting Educational Opportunities in Mid-America for the next Generation.

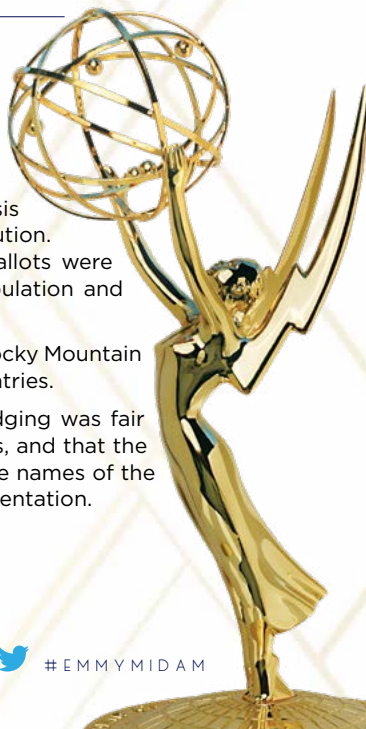
## JUDGING PROCEDURES

The purpose of the EMMY® Awards is to provide the incentive for continuing excellence in individual and program production achievement, and to focus public attention on the multi-talented individuals who comprise our industry.

Each entry was scored by members of a peer panel on the basis of a set of specific characteristics - content, creativity and execution. A score was given between 1 and 10 for each characteristic. Ballots were returned directly to the accounting firm of RubinBrown for tabulation and selection of nominees and winners.

The NATAS New York, Ohio Valley, Lone Star, Pacific Southwest, Rocky Mountain Southwest, Southeast and Suncoast chapters judged the 2020 entries.

Every measure possible has been taken to make certain the judging was fair and unbiased, the entries were scored purely on their own merits, and that the winners have been selected without influence or forethought. The names of the EMMY® recipients have remained confidential until tonight's presentation.



## 2020 MID-AMERICA CHAPTER BOARD OF GOVERNORS

- |  |  |
|--|--|
| ■ Victoria Babu, St. Louis, MO                   | ■ Jeimmie Nevalga, Komu, Columbia, MO                      |
| ■ Ann-Marie Berger, Nine Network, St. Louis, MO  | ■ John Paul, University Of Illinois, Champaign/ Urbana, IL |
| ■ Ginger Blackstone, Harding U, Searcy AR        | ■ Joe Prosperi, Nine Network, St. Louis, MO                |
| ■ Venton Blandin, Kmov, St. Louis, MO            | ■ Pj Randhawa Ksdk, St. Louis, MO                          |
| ■ Perry Boxx, Wpsd, Paducah, KY                  | ■ Jayne Ruben, Ksla, Shreveport, LA                        |
| ■ Sheila Condon-Rice, Ksdk, St. Louis, MO        | ■ Tim Snider, Spot Media, St. Louis, MO                    |
| ■ Bill Faris, Avatar Studios, St. Louis, MO      | ■ Polly Van Doren-Orr, Wdai, Kansas City, MO               |
| ■ Nick Genty, Katv, Little Rock, AR              | ■ Tony Villasana, Clancy Unlimited, St. Louis, MO          |
| ■ Steve Grant, Ky3, Springfield, MO              | ■ Angie Weidinger, St. Louis, MO                           |
| ■ Erin Hayes, College Of Ozarks, Pt. Lookout, MO | ■ Stacey Woelfel, University Of Missouri, Columbia, MO     |
| ■ Kris Ketz, Krmc, Kansas City, MO               | ■ <b>GOVERNOR EMERITUS</b>                                 |
| ■ Jim Kirchherr, Nine Network, St. Louis, MO     | Dr. Michael Murray, University Missouri, St. Louis         |
| ■ Andy Likes, The Vandiver Group, St. Louis, MO  |  |
| ■ Chad Mahoney, Wgem, Quincy, IL                 |  |

## PAST PRESIDENTS

- |                                 |                              |                               |
|---------------------------------|------------------------------|-------------------------------|
| ■ Mark Russell, 1962-64         | ■ Hal Protter, 1978-80       | ■ Jim Kirchherr, 1997-99      |
| ■ John Gunter, 1964-66          | ■ Irvin Davis, 1980-82       | ■ Paula Holtzman, 1999-01     |
| ■ Howard Streeter, 1966-68      | ■ Michael Hardgrove, 1982-84 | ■ Bobby Regnell, 2001-03      |
| ■ Michael McCormick, 1968-70    | ■ Carla Lane, 1984-86        | ■ Michael Hardgrove 2003-2006 |
| ■ James Johnson, 1970-71        | ■ Ava Brown 1986-87          | ■ Jim Kirchherr, 2007-2011    |
| ■ John Rider, 1971-73           | ■ William Bolster, 1987-89   | ■ Andgie Weidinger, 2012-2014 |
| ■ Gordon McGloshen, 1973-75     | ■ Allan Cohen, 1989-91       | ■ Stacey Woelfel, 2014-2017   |
| ■ Thomas Battista, 1974-75      | ■ Wayne Thomas, 1991-93      |                               |
| ■ Msgr. Joseph O'Brien, 1975-76 | ■ Hal Protter, 1993-95       |                               |
| ■ John McKay, 1976-78           | ■ Gregg Filandrinos, 1995-97 |                               |

## 2020 AWARDS COMMITTEE

- |                                   |                               |
|-----------------------------------|-------------------------------|
| ■ Anne-Marie Berger, Nine Network | ■ Jim Kirchherr, Nine Network |
| ■ Sheila Condon Rice, KSDK        | ■ Chad Mahoney, Quincy, IL    |
| ■ Bill Faris, Avatar Studios      |                               |





## DOMONIQUE BENN

A recipient of a National Edward R. Murrow award and an eight-time EMMY® Award nominated anchor, Domonique Benn has helped to lead the KSLA News 12 anchor team for ten years.

Domonique has worked in newsrooms in Mississippi, Georgia, and Virginia. The University of Florida graduate has a Bachelor of Science degree in Telecommunications-News and a minor in English with a concentration in African American Literature.

Domonique is a member of the Alpha Kappa Alpha Sorority, Inc., and the National Association of Black Journalists. She also is an involved member of the National Academy of Television Arts and Sciences Mid-American Emmy® chapter and was previously on the Board of Governors for the chapter. She is very active in the Ark-LaTex as well as in the March of Dimes. She continues to share her life's philosophy, "I am the master of my fate, I am the captain of my soul."

## MICHELLE BOGOWITH

Growing up in St. Louis, the ever-changing weather fascinated Michelle. In 2008 she graduated from The University of Missouri (MIZ) with a degree in Meteorology and Communications; in 2011 Michelle completed a Masters in Meteorology.

She began her career at KOMU-TV 8 in 2007, where she was recognized by the Missouri Broadcasters Association for Best Weathercast in 2010 and 2012. She's also won several reporting awards.

Michelle joined the WDAF weather team in 2012. She serves as the 4am and 9am meteorologist, Monday through Friday, as well as the FOX4 Weather teams lead stormchaser.

Since moving to Kansas City, Michelle volunteers with many local charities and serves as a board member for several organizations.

When she is not in front of the green screen or chasing storms, Michelle enjoys traveling, sporting events & spending time with her husband Gary, new baby Brody and her two dogs, Dakota and Frank the Tank.



## MIKE BUSH

Mike likes to say he's been around since the Paleozoic era. He's a 42 year veteran of local news and has spent the last 35 at KSDK-TV in St. Louis.

Mike anchors the 5-on-your-side newscasts at 5, 6 and 10 and is an award winning reporter. He's a two-time National Murrow Award winner, with 22 regional Murrows and nearly 90 Mid-America Emmy Awards. In 2012, he was inducted into the National Academy of Arts & Sciences Silver Circle.

In addition to his work with KSDK, Mike hosts the annual Musial Awards every December on the CBS Television Network. He has also worked for ESPN, NBC Sports and was the play-by-play voice of the 1999 Superbowl winning St. Louis Rams.

Mike has been married to his wife Claudia for 38 years and they have 4 children and 2 grandchildren.



## TONY CORNISH, JR.

Tony Cornish, Jr. is the Sports Director at WGEM-TV in Quincy, Illinois, the flagship station for Quincy Media, Inc. Tony's excitement and overall enthusiasm for Tri-State Sports can be heard in his voice every night he's on the air.

Tony was named 2020's "Best Television Sportscaster" by the Illinois Broadcasters Association. Tony and his team also won this year's "Best Sports Coverage" and "Best Sports Play-by-Play" awards from the Iowa Broadcast News Association.

Tony has covered multiple Super Bowls, BCS/CFP National Championship Games, World Series, NCAA Final Four games, and The Masters at Augusta National. He's worked at television stations in Florida, Alabama, Georgia, South Carolina, Tennessee, the New York-New Jersey-Philadelphia area, and now the Tri-State region of Illinois-Missouri-Iowa.

Tony is a highly sought after motivational and keynote speaker and has been involved in various community initiatives, youth empowerment seminars, and sports clinics/forums. He has volunteered countless hours helping to raise much needed funds for national and local charities across the country.







## BETH HUNT

Beth Hunt is an evening anchor for KATV. She joined Channel 7 as a General Assignment Reporter in November 2002.

An Arkansas native Beth has covered it all—from the Space Shuttle Columbia disaster and the opening of the Clinton Presidential Library, to the hype surrounding the first Razorback games of the year. Beth has anchored live shows from Heifer International, Riverfest, Toadsuck...and just about every other major festival or event in the state.

Beth has won several awards. She is part of the anchor team that won an EMMY® Award for Best Newscast and has won Associated Press awards for her news reporting.

In 2010 Beth was appointed by Governor Mike Beebe to serve on the AR Governor's Council on Fitness. She also donates her time and talents to various charities, including the Cystic Fibrosis Foundation, Big Brothers/Big Sisters and the American Heart Association.

## JEIMMIE NEVALGA

Jeimmie Nevalga has almost 20 years of experience producing local television newscasts. Currently, she is an associate professor for the Missouri School of Journalism and an executive producer for the commercial NBC affiliate, KOMU-TV, in Columbia, Missouri. Under her tutelage, students learn both the theory and practice of producing local newscasts.

As a member and former chair of the school's Diversity and Inclusion Committee, Nevalga is committed to giving voice to all members of the community and to fostering cultural dialogues in the workplace and the university.

Before the pandemic, she regularly traveled abroad for the Missouri School of Journalism. She has also worked as a producing consultant for Alhurra Network, based in Washington, D.C.

Nevalga graduated from the Missouri School of Journalism in 2000. Before becoming a professor, she spent 12 years producing TV news for organizations such as WISN 12 in Milwaukee, Wisconsin, and Chicago's CLTV and WGN.



NATIONAL  
ACADEMY  
OF TELEVISION  
ARTS & SCIENCES

MID-AMERICA  
CHAPTER

## WE HAVE A WHOLE NEW LOOK

Visit us at <https://emmymid-america.org/>

## FOR ALL THE LINKS TO THE 44<sup>TH</sup> MID-AMERICA EMMY GALA VIEWING PLATFORMS

<https://emmymid-america.org/>

## MEET THE BOARD OF GOVERNORS

<https://emmymid-america.org/about/>

## MEET ALL THE GOLD AND SILVER CIRCLE INDUCTEES FROM OVER THE YEARS

<https://emmymid-america.org/gold-silver-circles/>

## FROM THE GOLD & SILVER CIRCLE CHAIR



### On-line.

### In-person.

### It doesn't matter.

This is still an exciting night!

On behalf of your NATAS Mid-America Chapter we thank you for joining us virtually to celebrate excellence in our profession. Your support of our chapter's work is appreciated more than you'll ever know especially in a year when so many "curves" have been thrown our way.

Along with celebrating regional excellence in News, Sports, Documentaries, Promos and Crafts, we would also be honoring a select group of professionals with induction into the NATAS Mid-America Gold and Silver Circles tonight. The pandemic took that away from us this year.

Our chapter's leadership made the difficult but necessary decision to put the induction process "on hold" early in the pandemic. That included plans for recognizing professionals who have made meaningful and significant contributions in media at our annual gala scheduled for St. Louis and an earlier induction event in Central Illinois.

We are hopeful we can resume our chapter's Gold and Silver Circle induction process in 2021. We are also mindful of the possibility our plans could change just like they did this year. Please go to our NATAS Mid-America web site if there's someone you feel is worthy of this great honor. Nominations are received from members and non-members alike.

Here's to a better 2021 for us all!

### Kris Ketz

NATAS Mid-America Executive Vice President  
Chair, Gold and Silver Circle Induction Committee  
Evening News Anchor, KMBC-TV Kansas City

# #EMMYMIDAM



NATIONAL  
ACADEMY  
OF TELEVISION  
ARTS & SCIENCES

MID-AMERICA  
CHAPTER

FROM THE BOARD OF GOVERNORS

**YOU**  
— ARE ESSENTIAL.

**JOURNALISM**  
— IS ESSENTIAL.

**EVERY DAY.**

— WE CONGRATULATE YOU  
& WE SALUTE YOU!





## WALTER CRONKITE SCHOLARSHIP RECIPIENTS



### DEVIN BROOKS

Devin Brooks is from St. Louis and a senior at Western Illinois University majoring in broadcasting. He is currently an anchor, reporter, executive producer and web producer for his school's student-run TV station NEWS3. This past summer, Devin completed his third summer internship while working from home as a web producer for WREX-TV in Rockford, IL. This is the second time Devin has been awarded the Walter Cronkite Scholarship. He's working to become a reporter and hopes to be an anchor one day.

### MEGAN LEE

Megan Lee is a Broadcast Journalism Major at Harding University. She has worked for the Harding Sports Network and campus news station, HU16, for three years. Megan has learned how to do every job there is to do inside the studio and outside of the studio, including Directing, Producing, Anchoring, Studio Managing, and even traveling as the Videographer to shoot the University's football games. She was awarded the Multimedia Journalism Student of the Year award for the 2019-2020 school year.

Her passion is working on live sports productions, but her goal is to eventually work in a multitude of different areas such as live theatre productions, documentaries, and help shoot a television series. Megan had the opportunity to work for the MidAmerica EMMY® Awards Gala in 2019 as being a part of the social media team. She strives to work on as many productions as possible, gain new experiences, and to say yes to every opportunity.



### NICK LUTTRELL

Nick Luttrell is a graduated senior from Har-Ber High School in Springdale, Arkansas. Nick was heavily involved within his high school's TV program at Har-Ber. While he did many things such as live report for basketball games, create news packages and direct live streams his Sophomore & Junior year, his Senior year was where he became the first student ever to win 3 Of The Year awards at the 2020 Arkansas Scholastic Press Association. He won Broadcast On-Air Talent Of The Year, Broadcast Producer Of The Year, Broadcast Journalist Of The Year and was runner up in the Broadcast Video Editor Of The Year category at the 2020 ASPA convention. Luttrell did everything within Har-Ber TV; this included anchoring and producing a 45 minute long weekly football pregame show titled "Wildcat Sports Network", anchoring and producing a weekly school news show titled "Har-Ber Wildcat News", running and building up the HarBerWCSN social media pages, creating hype videos for the football and basketball teams and much more.



### ANNABEL THORPE

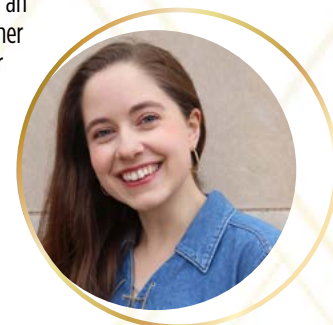
Annabel Thorpe is a senior at the University of Missouri, studying broadcast journalism and economics as a dual major. She is a reporter and anchor for the local NBC-affiliate station, KOMU-TV. She interned for CNN's Erin Burnett OutFront in New York City, and also worked as a reporter for a London TV news station in London, England. Thorpe has interned for the Dallas Morning News twice. She hopes to blend her knowledge of economics and business with her love for political reporting to tell unique stories that impact people's lives.



### EVANN TWITCHELL

Evann Twitchell is a senior at the University of Missouri-Columbia studying Documentary Journalism. Before college, she spent two years touring with The Young Americans, an international music outreach organization. She is currently at work on her documentary thesis film, Dear Heart of Glass Kids, as a Cherng Summer Scholar with support from the Panda Charitable Foundation.

She works as a freelance video editor for MSNBC. In her free time she loves serving as a worship leader for her campus ministry, writing music, and advocating for sustainability. Evann is particularly interested in pursuing a storytelling career through film and photojournalism in Middle Eastern countries. She is so thankful to the NATAS scholarship committee for this honor.





## STUDENT WINNERS

### COLLEGE NEWS: GENERAL ASSIGNMENT-SERIOUS NEWS

**Overdue Elevator Inspections Plague University**  
University of Arkansas School of Journalism  
and Strategic Media  
Travis Feltner

### COLLEGE SHORT FORM - NON-FICTION

**Why We Rip - a Documentary about Cycling**  
University Of Missouri St. Louis  
Drew Dubis

### COLLEGE LONG FORM - NON-FICTION

**Show Me Chefs Season 4 Ep1 Ducking Rich**  
Missouri State University  
Loreli Adams, Deborah Larson

**IX**  
University Of Arkansas  
Denzel Jenkins

### COLLEGE SPORTS

**WEIU News Watch**  
Oscar Rzodkiewicz

### COLLEGE SPORTS PROGRAM

**WEIU Sports Watch Program**  
WEIU News Watch|Eastern Illinois University  
Oscar Rzodkiewicz

### COLLEGE CRAFT TALENT

**Sky Watch Weather**  
WEIU-TV/Eastern Illinois University  
Everett Lau

**Ashlyn Brothers 2020 Reel**  
University of Arkansas School of Journalism  
and Strategic Media  
Travis Feltner

### COLLEGE CRAFT WRITING

**College Of The Ozarks**  
Avery Reed

### COLLEGE CRAFT PHOTOGRAPHER

**Bobcat Thunder**  
College Of The Ozarks  
Ben Johnson, Nathaniel Snipes, Caleb Brubaker

### COLLEGE CRAFT PHOTOGRAPHER

**Bobcat Thunder**  
College Of The Ozarks  
Ben Johnson, Nathaniel Snipes, Caleb Brubaker

### COLLEGE CRAFT VIDEO ESSAY

**Homeless in Chicago**  
SIU|Carbondale  
Blake Parham

### HIGH SCHOOL NEWSCAST

**HTV Magazine**  
Hillcrest High School  
HTV Staff

### HIGH SCHOOL NEWS: GENERAL ASSIGNMENT-SERIOUS NEWS

**Street Sounds**  
Hillcrest High School  
Anna Daniel, Leanna Teudan

### HIGH SCHOOL NEWS: GENERAL ASSIGNMENT - LIGHT NEWS

**Heart of a Ram | Ms. Roberson**  
Lakeside High School  
Brooks Bell

### HIGH SCHOOL LONG FORM- NON-FICTION

**Becoming Riley Benton**  
Lakeside High School  
Chase Hartsell

### HIGH SCHOOL SPORTS

**Passing Though the Playoffs: Lakeside Volleyball**  
Lakeside High School  
Brooks Bell

**Kobe**  
Har-Ber High School  
Nick Luttrell

### HIGH SCHOOL SPORTS - LIVE EVENT

**Har-Ber High School Football | Har-Ber vs. Little Rock Central**  
Har-Ber High School  
Staff

### HIGH SCHOOL SPORTS PROGRAM

**Wildcat Sports Network | Episode 62**  
Har-Ber High School  
Nick Luttrell

### HIGH SCHOOL PUBLIC SERVICE (PSAS)

**Dear Santa**  
Har-Ber High School  
Samantha Lewandowski, Graham Smith

### HIGH SCHOOL ANIMATION/ GRAPHICS/SPECIAL EFFECTS

**Collect**  
Bulldog TV  
Daniela Zaragoza, Teresa Gallegos

### HIGH SCHOOL EDITOR

**Har-Ber High School**  
Samantha Lewandowski

**High School Photographer**  
Har-Ber High School  
Samantha Lewandowski

### TALENT

**Har-Ber High School**  
Nick Luttrell





## CELEBRATING YOU and TEAM WORK

Winning teams are made of many winning people... sometimes more than the names included on the entry form!

Was your work nominated for or awarded an EMMY® over the years? Was a co-worker or collaborator not included because of budgetary constraints? It's never too late to purchase a beautiful plaque or crystal award celebrating these contributions. Select from elegant, high gloss rosewood finish plaques personalized with an inscription celebrating your accomplishment, or our beautiful, translucent art glass featuring an image of the Emmy® statuette and your own personal information. Student Awards for Excellence Pillars are also available, with your accomplishment sandblasted and gold color-filled on optically clear crystal. All prices include engraving and shipping.



Nomination Plaque: \$150  
8 x 10 Rosewood Finish  
Plaque commemorating  
Emmy® Award nominations.



Plaque with "life size" EMMY® Statuette.  
\$400. 10-1/2 x 13 Ebony Finish Plaque.  
For those who contributed to the  
EMMY® AWARD winning work.  
Can be personalized



Production Plaque: \$150  
10-1/2 x 13 Rosewood Finish Plaque  
commemorating Emmy® Award  
nominated productions.



Student Pillar:  
6": \$135  
8": \$150  
Optical Crystal Pillar  
with your inscription  
etched and gold filled.



Art Glass: \$150  
10 x 7 Curved Translucent Art Glass,  
depicting Emmy® Statuette and your own  
personal copy.

Society Awards is the proud awards partner of the Mid-America Chapter.  
To place your order, contact Maggie Eubanks at [maggie@emmymid-america.org](mailto:maggie@emmymid-america.org)

44<sup>TH</sup> ANNUAL  
MID-AMERICA  
EMMY® AWARDS

2020 THE  
NOMINEES

#EMMYMIDAM





44<sup>TH</sup> ANNUAL  
MID-AMERICA EMMY® AWARDS  
THE NOMINEES

### TEAM COVERAGE

#### Honoring a Fallen Officer

KHBS/KHOG  
Colleen Clement

#### April Storms

KY3/KSPR  
Bridget Lovelle

#### May Tornado Outbreak Coverage

KMBC  
Ciera Lundgren, Bryan Busby, Katie Horner,  
Johnny Rowlands, Patrick Brown, Pete Grigsby

#### Game 7 Stanley Cup History

KSDK  
Abby Llorico, Casey Nolen, Chris Davis, Anne Allred,  
Justina Coronel, Sara Machi, Brandon Merano,  
Frank Cusumano, Mike Bush, Rene Knott,  
Jenna Barnes, Ahmad Hicks, Morgan Young

### CONTINUING COVERAGE

#### You paid WHAT in property taxes?

KCTV  
Angie Ricono, Ken Ullery, Casey Clark,  
Greg Milota

#### Housing Injustice - T.E.H. Realty Investigation

KMBC  
Matt Flener, Brett Elliott, William Klinkhardt

### SPOT NEWS

#### Tequila KC Mass Shooting

KMBC  
Dan O'Donnell

#### Family Unscathed After EF-3 Tornado

KATV  
Shelby Rose, Brian Emfinger

#### Jefferson City Tornado

KCTV  
Leslie Aguilar

#### Remains Found In Landfill

KOMU  
Ryan Takeo, Kellie Stanfield, Noah Klein,  
Rosemond Crown

### SHORT FORMAT PROGRAM

#### Heartland Terror | The Greenlease Kidnapping

KCPT  
John McGrath

#### Face To Face

The Storyteller Studios  
Josh Hester, Chris Costello

#### Kingdom Short: The Combine

KC CHIEFS  
Dane Van Why, Luke Benna, John Mathews

#### 3 Lawyers Eating Sandwiches: Union Loafers

Coolfire  
Terry Crouppen, Andy Crouppen, Edward Herman,  
Jeremy Corray, Roxanne Lingua

#### Street Medicine

Once Films  
Chris Ryan, Kim Van Oosten, Brian Reardon

#### The Block | Christopher Elbow

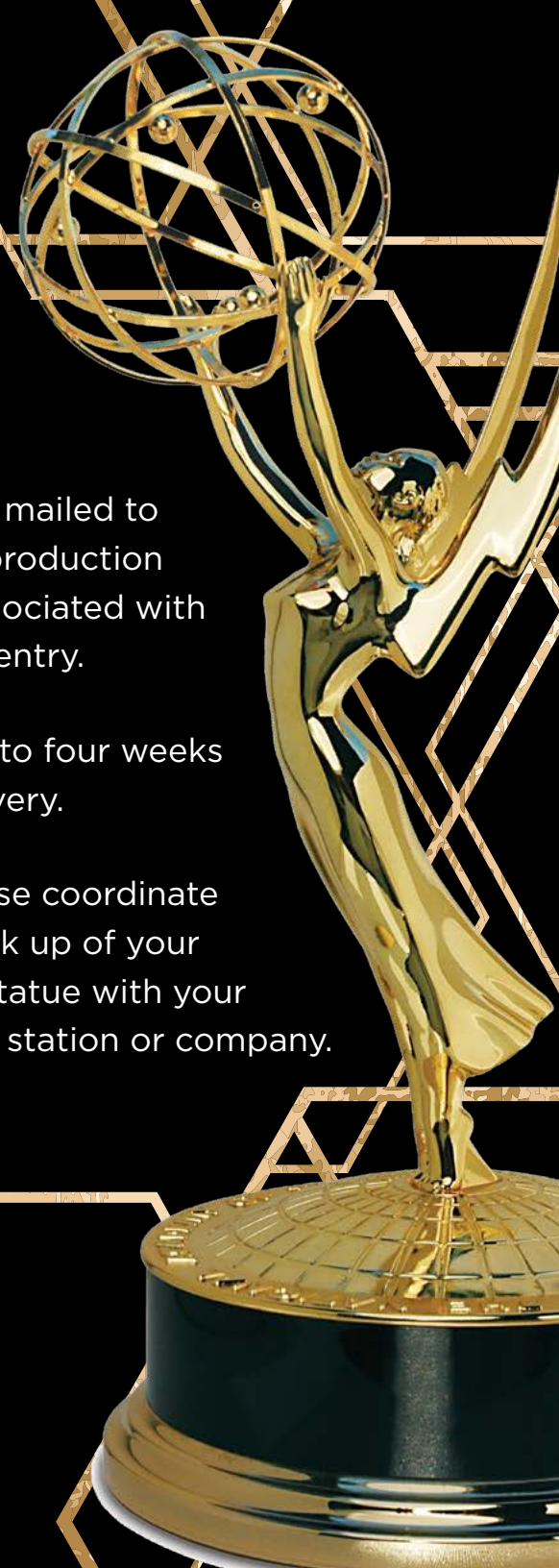
KCPT  
Cole Blaise, Cody Boston, Jonathan Bender,  
Josh Gloer, Evan Wunsch

# EMMY® STATUES

All statues will be mailed to  
the stations or production  
companies associated with  
the winning entry.

Allow up to four weeks  
for delivery.

Please coordinate  
pick up of your  
statue with your  
station or company.







44<sup>TH</sup> ANNUAL  
MID-AMERICA EMMY® AWARDS  
THE NOMINEES



**ENVIRONMENT - NEWS SINGLE  
STORY/ PROGRAM FEATURE  
SEGMENT**

**Keeping the Natural State Natural**

KATV  
Shelby Rose, Brian Emfinger

**The Power of Pig Poop**

HEC-TV  
Suzanne Vanderhoef, Peter Foggy, Colby Marshall

**In the Shadow of Smoke Stacks**

KSDK  
PJ Randhawa, Erin Richey

**Frustrated Flooded Farmers**

WDAF  
John Holt, Jon Haiduk

**Wasted: Where Your Recycling Really Went**

KSDK  
Jacob Long

**WRITER: PROGRAM/PROGRAM  
FEATURE (NON-NEWS)**

**Ed V. Facebook**

Coolfire  
Edward Herman

**Sons & Daughters of Thunder**

Fourth Wall Films  
Kelly Rundle

**HEC-TV**

Paul Schankman

**Ed V. Elevators**

Coolfire  
Edward Herman

**WRITER - NEWS**

**KATV**

Kyle Deckelbaum

**WDAF**

John Holt

**KSDK**

Mike Bush

**TALENT - ANCHOR - WEATHER**

**WDAF**

Joseph Lauria

**Beyond the Weather App**

KY3/KSPR  
Abby Dyer

**KOMU**

Kenton Gewecke

**KSDK**

Scott Connell

**BUSINESS/CONSUMER - NEWS  
SINGLE STORY/ PROGRAM  
FEATURE SEGMENT**

**Frozen Food and Stolen Pictures**

KSHB  
Cat Reid, Rex Harris

**Hidden Danger: Kids and Cars**

KSDK  
Chris Davis

**Cancer Doc**

WDAF  
Linda Wagar, Rachel Coleman

**EDUCATION/SCHOOLS - NEWS  
SINGLE STORY/ PROGRAM  
FEATURE SEGMENT**

**The Worst and Best of Times**

KSLA  
Doug Warner

**Don't Let the Streets Teach**

KSLA  
Doug Warner

**Education Inspiration**

KSDK  
Mike Bush, Tom Stasiak

**"Harriet Tubman: An American Hero"**

HEC TV  
Sarah Thompson, Boyd Pickup

**Think Racism Doesn't Exist in 2019?**

KCTV  
Joe Chiodo

**FEATURE NEWS REPORT - LIGHT  
FEATURE**

**Love Before First Sight**

KSLA  
Doug Warner

**Union Station Ghost**

KMBC  
Martin Augustine

**Lincoln Prep: More Than Just A Game**

KSHB  
Kevin Holmes, Darrius Smith

**Elfing**

KOMU  
Emily Spain

**FEATURE NEWS REPORT-  
SERIOUS FEATURE**

**Finding Justice for Tawnya Knight**

KCTV  
Joe Chiodo

**Doctors Explore Near Death Experiences**

WDAF  
Matt Kline, Lisa McCormick, Abby Eden

**It's Tough Sitting Here**

KMBC  
Donna Pitman, Whitney Blake Tyler

**Red Light Rescue**

KSLA  
Doug Warner

**LIFESTYLE PROGRAM -  
PROGRAM/SPECIAL**

**Making #103**

KMOS  
Roy Millen, Christy Millen, Eric Boedeker,  
Matt Burchett

**A Garden Home Christmas**

Arkansas PBS  
Brent Walker, Patrick Green, CJ Burks

**Ed V. Cereal: Master Class**

Coolfire  
Terry Crouppen, Andy Crouppen, Edward Herman,  
Jeremy Corray, Josh McNew

**Ed V. Elevators**

Coolfire  
Terry Crouppen, Andy Crouppen, Edward Herman,  
Jeremy Corray, Josh McNew



44<sup>TH</sup> ANNUAL  
MID-AMERICA EMMY® AWARDS  
THE NOMINEES

**INTERVIEW/DISCUSSION -  
PROGRAM**

**Keeping Your Kids Safe**

KSLA

Domonique Benn, Adria Goins, Jennifer Duckworth,  
Jeff Dillard

**First Person One on One: Isaac Mizrahi**

HEC-TV

Paul Schankman, Julie Winkle, Christina Chastain

**Pinch Me Moments with Mackenzi Lee**

HEC-TV

Angie Weidinger, Greg Kopp, Julie Winkle,  
Christina Chastain

**Art House**

KCPT

John McGrath

**Hancock and Kelley**

KTVI

John Brown, Michael Kelley, John Hancock

**NEWSCAST-MORNING/  
DAYTIME MARKETS 1-49**

**Arrest in KCK Mass Shooting**

KMBC

Allison Derks

**Linwood Tornado Aftermath**

KMBC

Patrick Mirch, Michael Gant, Kayla Schartz

**KCTV 5AM - Linwood Tornado**

KCTV

Michael Hedges, Joe Chiodo, Leslie Aguilar  
Rusty Glusing, Jennifer Feick, Brett Akagi

**Road To Gloria**

KSDK

Jennifer Feldman, Megan Mays

**TALENT/ANCHOR-NEWS**

**KTVI**

John Brown

**KMBC**

Kris Ketz

**WDAF**

John Holt

**Catastrophe, Champs and Covid**

KCTV

Ellen McNamara

**The Big Stories: Going Beyond Headlines**

KCTV

Joe Chiodo

**KLRT**

Kevin Kelly



# CONGRATULATIONS

TO ALL THE 2020 STUDENT WINNERS,  
SCHOLARSHIP RECIPIENTS, EMMY® AWARD  
NOMINEES, & RECIPIENTS

insights + imagination = ingenuity

106 W. MADISON AVE. :: SUITE 210 :: ST. LOUIS, MO 63122  
VISUALINGENUITY.COM





# 44<sup>TH</sup> ANNUAL MID-AMERICA EMMY® AWARDS THE NOMINEES



## GENERAL ASSIGNMENT REPORT - WITHIN 24 HOURS

### Honoring Emma

WDAF  
Jon Haiduk, Kera Mashek

### Holding the Walls Together

KCTV  
Betsy Webster

### Flooded House via SKY7

KATV  
Shelby Rose, Brian Emfinger, Richard Newman

### First Day of Freedom

KSHB  
Andres Gutierrez, Al'Lavee Miller, Tyler Navas

## GENERAL ASSIGNMENT REPORTING - NO TIME LIMIT

### Software Failure Leads to Wrongful Arrest

KSLA  
Stacey Cameron

### The Price of Pursuit

KSHB  
Cat Reid, Chris Morrison

### Reflected Danger

KSDK  
Chris Davis

### The Suburban Cop's Sexting Spree

KSDK  
Jacob Long, Randy Schwentker

## EDITOR - PROGRAM

### Ed V. Facebook

Coolfire  
Edward Herman, Roxanne Lingua

### The Science of Blues Hockey

Coolfire  
Patrick Vaughan

### Ed V. Cereal: Master Class

Coolfire  
Edward Herman, Wes Murrell

### Men & Women of Distinction: Mike Beebe

Galusha Creative LLC and Arkansas PBS  
Les Galusha

## EDITOR - SHORT FORM (PROMO, PSA, COMMERICAL)

### Fayetteville Police Department: "Ride Along"

City Of Fayetteville  
Douglas Bankston

### KC CHIEFS

Dane Van Why

### Cheers to 100

160over90  
Keith Kennedy, Daniel Stewart

### KC on KC // Donuts

Proximity  
Matt Terwilliger

continued on page 28

## A WORD ABOUT JUDGING

### PEER JUDGING DEFINED

The success of the Emmy® awards process depends on the willingness of qualified professionals to serve as judges. As stipulated by the "Standard Clauses," those persons entering the competition have agreed to serve as a judge, when asked.

A peer judge is defined as any person with a minimum of two years of professional experience in the field of television program production, programming, or allied media who is directly engaged in or supervises the discipline they're being asked to judge. Potential judges may also include professionals in allied fields, who by the specific nature of their work are uniquely qualified to make judgmental decisions concerning particular areas of television or media production. Examples of peer judges include: television and multi-media writers, producers, directors; programming, production and news executives; craft persons; advertising agency executives and creative directors involved in programming decisions; print journalists (who have hands-on television production experience); sports professionals; college university educators who represent journalism/film/television/media; former broadcast journalists, and media retirees.

To all who judged in 2020, thank you!



# 44<sup>TH</sup> ANNUAL MID-AMERICA EMMY® AWARDS

## THE NOMINEES



NATIONAL  
ACADEMY  
OF TELEVISION  
ARTS & SCIENCES

MID-AMERICA  
CHAPTER



### EDITOR - SHORT FORM (PROMO, PSA, COMMERCIAL) CONTINUED

#### Flags of Joy

Tybee Studios  
Jared Ulrich

#### Spot Content Studio

Jason Poole

#### Entire Lives-Enterprise, St. Louis Blues

90 Degrees West  
Scott Conger

### EDITOR - NEWS

#### Fox Sports Midwest

Krystal Hall

#### KSDK

Randy Schwentker

### NEWS WEATHERCAST

#### Rain, Sleet or Snow

KTVI  
Chris Higgins

#### Tornadoes Devastate Kansas City Area

KSHB  
Gary Lezak, Lindsey Anderson, Gerard Jebaily

#### Gliding with Thermals

KTVI  
Brigit Mahoney

### MILITARY - NEWS SINGLE STORY/ PROGRAM FEATURE SEGMENT

#### Iwo Jima Veteran

KSDK  
Mike Bush, Tom Stasiak

#### WWII Veteran Adolphus Thaddeus Watson

HEC TV  
Cordell Whitlock, Jacqui Poor, Peter Foggy

#### Rest Easy Marine

KMBC  
Kris Ketz, Turner Twyman

#### The Story of Mike

KCTV  
Angie Ricono, Ken Ullery, Casey Clark

### TALENT: REPORTER

#### KSLA

Doug Warner

#### KSDK

Casey Nolen

#### KSDK

Abby Llorico

#### KSDK

PJ Randhawa

## EMMY® PROMOTION

All publicity, advertising or any written reference undertaken by nominees and award recipients to the Emmy® Awards, must clearly state that the awarded achievement is for a Regional Emmy® Award. The word "Regional" must appear in these instances. The recipient of a nomination or an Emmy® Award may refer in advertising and publicity to the fact that they have been honored only for one year after the recognition was bestowed. They may use a replica of the Emmy® statuette in such advertising. Individuals who significantly contributed to the production or craft but were not honored with a statuette cannot specifically advertise they are an Emmy® award recipient. They can only state they worked on the recognized program.





44<sup>TH</sup> ANNUAL  
MID-AMERICA EMMY® AWARDS  
THE NOMINEES

**MUSICAL COMPOSITION/  
ARRANGEMENT**

**The Science of Blues Hockey - Original Music**

Coolfire  
Brent Johnson

**Sons & Daughters of Thunder**

Fourth Wall Films  
William Campbell

**Backroads**

WILL  
John Pennell, Graham Edwards

**Safety Squad: The Musical - Terry's Safety Squad**

Coolfire  
Brent Johnson

**GRAPHICS/ANIMATION -  
NEWS/PROGRAM**

**Spotlight**

HEC-TV  
Colby Marshall

**National Rollercoaster Day**

Aligned Media  
James Ortwerth, Nicole Pappas

**SPECIAL EVENT COVERAGE  
(OTHER THAN NEWS OR  
SPORTS) LIVE OR EDITED**

**Chiefs Kingdom Champions Parade**

KSHB  
Matthew Waggoner, Melissa Greenstein, Maggie Blair,  
Aaron Finster, Kevin Holmes, Ariel Rothfield,  
Sarah Plake, Jordan Betts, Dia Wall, Candi Laster

**Evergy & The Elders Kansas City**

WDAF  
Kathy Quinn, Andreina Byrne

**Phish Live St. Louis - Play Gloria!**

201 Productions LLC  
Trey Kerr, Greg Correia, Conway McDonald-O'Lear,  
Wes Petty, Drew Wilson, Jeff Vinvson

**Blues Stanley Cup Parade**

Fox Sports Midwest  
Timothy Trokey, Phil Mollica, Scott Warmann,  
Gavin Bodell, Larry Mago, Derrion Henderson,  
Mandy Murphey, Randi Naughton, Katherine  
Hessel, John Brown, Alexander Schuster,  
Wade Francom

**Blues March to the Arch**

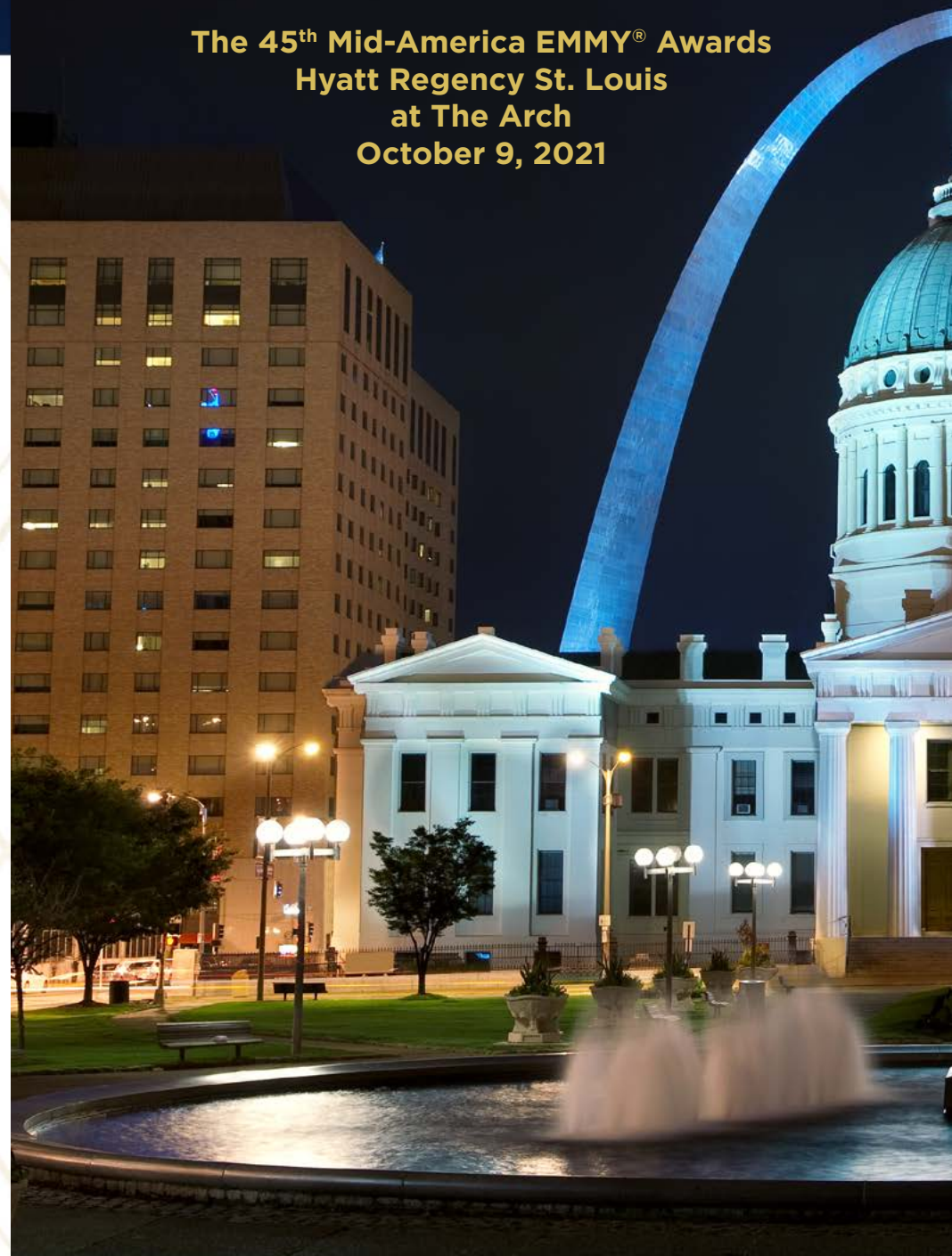
KSDK  
Sheila Condon Rice, Sonya Potter, Kay Quinn,  
Mike Bush, Anne Allred, Frank Cusumano, Rene Knott,  
Abby Llorico, Casey Nolen

**Taking to the Skies**

KSLA  
Marie Waxel, Blane Skiles, Jayne Ruben,  
Tyrone Davis

*Save the Date!*

**The 45<sup>th</sup> Mid-America EMMY® Awards  
Hyatt Regency St. Louis  
at The Arch  
October 9, 2021**





# 44<sup>TH</sup> ANNUAL MID-AMERICA EMMY® AWARDS

## THE NOMINEES



NATIONAL  
ACADEMY  
OF TELEVISION  
ARTS & SCIENCES

MID-AMERICA  
CHAPTER



### MAGAZINE PROGRAM

#### **Hy-Vee Chiefs: Inside Super Bowl LIV**

KC CHIEFS

John Mathews, Mitch Holthus, B.J. Kissel

#### **The Block | River Market**

KCPT

Cole Blaise, Emily Woodring, Cody Boston,  
Jonathan Bender, Josh Gloer, Evan Wunsch

#### **Missouri Life TV: Route 66 Pt. 2**

The Evoke Group

Austin Kolb, Meredith Hoenes, Will Moore, Evan Wood

#### **Missouri Life TV: Lake Ozarks**

The Evoke Group

Austin Kolb, Will Moore, Meredith Hoenes, Evan Wood

#### **Spotlight: Local Women Artists**

HEC-TV

Jayne Ballew, Colby Marshall, Julie Tristan,  
Paul Schankman, Brenda Kimberlin, Julie Winkle,  
Kelly Maue, Suzanne Vanderhoef, Greg Kopp

### INFORMATIONAL/ INSTRUCTIONAL/ PROGRAM SPECIAL

#### **Higher Octaves**

KCPT

Brad Austin

#### **Fall 2019 Weather Special**

KTVI

Peggy Pleimann, Glenn Zimmerman, Brigit Mahoney,  
Chris Higgins, John Fuller, Angela Hutti, Jaime Travers

### INFORMATIONAL/ INSTRUCTIONAL/ PROGRAM FEATURE SEGMENT

#### **Making: Thunder Lodge Trading Company**

KMOS

Christy Millen, Roy Millen, Eric Boedeker

#### **The Story of Chocolate**

HEC-TV

Suzanne Vanderhoef, Peter Foggy

#### **Best of Ed Versus - Ed V. Naps**

Coolfire

Terry Crouppen, Andy Crouppen, Edward Herman,  
Jeremy Corray, Josh McNew

### INVESTIGATIVE REPORT - SINGLE STORY

#### **Serial Squatters**

KMOV

Mark Hadler, Chris Nagus

#### **Natasha's Story**

KCTV

Angie Ricono, Casey Clark, Ken Ullery

#### **Non-profit Under Federal Investigation**

KSHB

Andy Alcock, Chase Lucas

## WE HAVE A WHOLE NEW LOOK

Visit us at <https://emmymid-america.org/>

## FOR ALL THE LINKS TO THE 44<sup>TH</sup> MID-AMERICA EMMY GALA VIEWING PLATFORMS

<https://emmymid-america.org/>

## MEET THE BOARD OF GOVERNORS

<https://emmymid-america.org/about/>

## MEET ALL THE GOLD AND SILVER CIRCLE INDUCTEES FROM OVER THE YEARS

<https://emmymid-america.org/gold-silver-circles/>





44<sup>TH</sup> ANNUAL  
MID-AMERICA EMMY® AWARDS  
THE NOMINEES



### INVESTIGATIVE REPORT - SERIES

#### Apartment Complex Issues

KSHB

Andy Alcock, Chase Lucas, Rex Harris

#### Bad Apple Teacher

KSDK

PJ Randhawa, Andy Broadway, Erin Richey,  
Sonya Potter

#### The Truth About Your Taxes

KCTV

Angie Ricono, Ken Ullery, Casey Clark, Greg Milota

### NEWSCAST - EVENING MARKETS 100+

#### WGEM News at Six - Snowstorm

WGEM

Chad Mahoney, Gary Davis, Dylan Austin

#### KNOE 8 News 10pm Ruston Tornado

KNOE

Aaron Dietrich, Jessica Torricelli, Perry Robinson,  
Brad Ginsberg

#### Barges hit Dam During Flood

KHBS/KHOG

Melody Kwok

### TALENT - PERFORMER/HOST

#### KMOV Surprise Squad

KMOV

Matt Chambers

#### Ed V. Cereal: Master Class

Coolfire

Edward Herman

#### Abby in the AM

KSDK

Abby Llorico

#### Ed V. Elevators

Coolfire

Edward Herman

### ARTS/ENTERTAINMENT - NEWS STORY

#### Grain Bin Blues

WAND

Joseph Astrouski

### ARTS/ENTERTAINMENT - PROGRAM FEATURE SEGMENT

#### Props to Alaina

HEC-TV

Angie Weidinger, Greg Kopp, Cecil Corbett

#### Metal Petals

HEC-TV

Suzanne Vanderhoeft, Peter Foggy

#### Salute to Women

KMOV

Dianne Casey, Heath A. Cary, Jim Thomas

#### The Nudie Devotee

Arkansas PBS

Casey Sanders, Charles Eric White

### ARTS/ENTERTAINMENT - PROGRAM/SPECIAL

#### Branson Christmas Music Show Special

Outpost Worldwide, LLC

Mike Wunsch

#### Sons & Daughters of Thunder

Fourth Wall Films

Tammy Rundle

#### Room Tone

KCPT

Cody Boston, Morgan Cooper

### DOCUMENTARY - HISTORICAL

#### Land of Opportunity

KCPT

Nicholas Wiggins, Cole Blaise, Cody Boston,  
Samuel Jones, Nathaniel Bozarth,  
Christopher Cook

#### The Andrew Drumm Legacy

Summit Video Services

Chad Godfrey, Brad Smith

#### Men & Women of Distinction: Mike Beebe

Arkansas PBS

Kathryn Francis Tucker, Les Galusha, Casey Sanders

### DOCUMENTARY - CULTURAL

#### Code of Conduct

KSLA

Jayne Ruben, Blane Skiles, Bubba Kneipp

#### Chronicle: Osborn Wind Project

KMBC

Brett Elliott, Matt Flener, Cara Doyle Wright

#### Illinois Country

WILL

DJ Roach, Sarah Edwards

#### Becoming Harriet Beecher Stowe

Fourth Wall Films

Kelly Rundle

#### Mid Century Modern in St. Louis

Nine Network

Kara Vaninger, Brooke Butler, Brian Holder

### SPECIALTY ASSIGNMENT REPORT - NEWS SERIES

#### Spotlight on Those Who Served

KMOV

Krista Ulberg, Steve Savard

#### Not Enough Beds: Fighting For Emma

KCTV

Joe Chiodo

#### Negro League Centennial Celebration

KSHB

Kevin Holmes, Lindsay Shively, Rex Harris,  
Al'Lavee Miller, Dia Wall

#### American Truth

WPSD

Todd Faulkner, Perry Boxx, Mike Spissinger

#### Anchors Aweigh: Inside the US Navy

KMBC

Steven Albritton



44<sup>TH</sup> ANNUAL  
MID-AMERICA EMMY® AWARDS  
THE NOMINEES



### SPECIALTY ASSIGNMENT- PROGRAM/SPECIAL

**Climbing for a Cause**

KY3/KSPR  
Sara Forhertz

**Presidential Libraries Museums & More**

KPLR  
Kimberly Young, Patrick Clark

**Engineering Fire**

University Of Illinois, Big Ten Network  
Timothy Hartin, Kaitlin Southworth,  
Alison Davis Wood, Robin Kaler, Eric Todd Wilson,  
Kent Brown

**The Journey of African American Police**

Nine Network  
Ruth Ezell, Brian Holder

### NEWSCAST WEEKEND

**Chiefs AFC Championship Postgame**

KMBC  
Scott Thompson

**Arkansas Flooding Coverage**

KATV  
Katelyn Deckelbaum, Kyle Deckelbaum

**2 Shootings, 2 Days**

KSDK  
Suzanne Herman, Andrea Firestone

### PHOTOGRAPHER - PROGRAM

**The Craft of Allen Edmonds**

Once Films  
Chris Ryan

**Flags of Glory**

LP Creative Studio  
Scott Louis, Sean McFarland

**The Wagon**

Motionpath  
Brant Hadfield

### PHOTOGRAPHER - NEWS

**KSDK**

Randy Schwentker

**KSHB**

Chase Lucas

### AUDIO - LIVE OR POST PRODUCTION

**Illinois Football Hype Video**

JM Films  
Dane Dickmann

**The Science of Blues Hockey**

Coolfire  
Brent Johnson

**Spot Content Studio**

Sanford Mendelson

### DIRECTOR - LIVE OR RECORDED LIVE (PL TRACK IS PREFERRED)

**The Global War on Terrorism Memorial Dedication**

jackson+appleton  
Robin Jackson

**Phish St. Louis - Play Gloria!**

201 Productions LLC  
Trey Kerr

**Fox Sports Midwest**

Tom Mee

### DIRECTOR - NON-LIVE (POST-PRODUCED)

**Gray's Words**

Aligned Media  
Scott Huegerich

**United Way St. Louis 2019 Campaign**

Once Films  
Mark Wickersham

**Men & Women of Distinction: Mike Beebe**

Arkansas PBS  
Kathryn Tucker

### NEWS PRODUCER

**KMBC**

Hailee Hopkins

**Throw Out the Rundown**

KMBC  
Ciera Lundgren

**KFVS**

Robbyn DeSpain

### NEWSCAST-MORNING/ DAYTIME MARKETS 50+

**KSLA**

Adria Goins, Jeffrey Dillard, Brandon Decareaux

**Severe Weather Hits the Ozarks**

KOLR  
Joe Murano, Elisa Raffa

**KARK**

Susanne Brunner, Kristen Cook, Hayden Nix,  
Pat Walker

**KARK 4 News at 4pm: Historic Flooding**

KARK-KLRT  
Matthew Sewell

### COMMUNITY SERVICE

**Thursday's Child**

WDAF  
Sherae Honeycutt

**Project 5**

KSDK  
Christopher Randall, Morgan Young, Anne Allred

**Best of 2019 Community Outreach**

KC CHIEFS  
Matt McMullen





44<sup>TH</sup> ANNUAL  
MID-AMERICA EMMY® AWARDS  
THE NOMINEES



**POLITICS/GOVERNMENT  
- NEWS STORY/PROGRAM  
FEATURE SEGMENT**

**New Prosecutor Abuses Parking Privileges**

KSDK  
Jacob Long, Andy Broadway

**Kansas Agriculture Tax**

KSHB  
Andy Alcock

**Jason Kander**

KSDK  
Mike Bush, Tom Stasiak

**Taxpayers Picking Up Tab: Staff Bonuses**

KSLA  
Stacey Cameron

**JOURNALISTIC ENTERPRISE**

**Casey Nolen Reports**

KSDK  
Casey Nolen

**Investigations and Documentaries**

KMBC  
Matt Flener

**Cat Reid Reporting - For Mom**

KSHB  
Cat Reid

**VIDEO JOURNALIST**

**The Sad Story Of Harry Ashcraft**

KTVI  
Wade Smith

**KCTV**

Nathan Vickers

**A Decade In Haiti**

KSDK  
Casey Nolen

**HEC-TV**

Paul Schankman

**INTERSTITIAL**

**The Virtual Tour Trailer**

Spot Content Studio  
Sean Hadley, Sean Stone, Tim Kimberling

**The Craft of Allen Edmonds**

Once Films  
Chris Ryan

**Tyale McNary**

Nine Network  
Frank Popper, Tyale McNary

**U.S. Soy Growers' Anthem**

Spot Content Studio  
Lauren Nieman, Alvaro Aro, Tim Kimberling

**NEWS PROMO - SINGLE SPOT**

**Officer Stephen Carr: End of Watch**

KHBS/KHOG  
Clint Gooch, Ken Bauer

**Ole Miss Murder**

KSDK  
Courtney Ittner

**Bulletproof Backpacks**

KSDK  
Courtney Ittner

**NEWS PROMO -  
CAMPAIGN / IMAGE**

**Stands For You Campaign**

KCTV  
Mike Stewart

**FOX4 70<sup>th</sup> Anniversary Campaign**

WDAF  
Daniel Horner, Danielle Ray

**Jonesboro Tornado**

KAIT  
Adam Dozier, Drew Hancock

**PROGRAM PROMO - SINGLE  
SPOT OR CAMPAIGN  
(NON-NEWS)**

**For Those Still Curious**

KCPT  
Cole Blaise, JP Haley, Emily Harris

**KMBC Chronicle: The Osborn Wind Project**

KMBC  
Leah Foster

**KSHB Chiefs Championship Parade**

KSHB  
Aaron Liversedge, Chris Allen, Tony Lytle

**Arkansas CW Matrix**

KHBS/KHOG  
Susan Searle, Miguel Medina

**COMMUNITY/PUBLIC SERVICE  
(PSAS) - SINGLE SPOTS OR  
CAMPAIGNS**

**Distracted Driving - It Can Wait**

Westminster Christian Academy  
Mike Rohlfing

**Wipes Clog Pipes**

Spot Content Studio  
Sean Hadley, Sean Stone, Lauren Nieman,  
Tim Kimberling, Alvaro Aro

**United Way St. Louis 2019 Campaign**

Once Films  
Chris Ryan, Mark Wickersham, Eric Cloutman

**Safety Squad: The Musical - Terry's Safety Squad**

Coolfire  
Terry Crouppen, Andy Crouppen, Edward Herman,  
Jeremy Corray, Wes Murrell, Tammie Holland,  
Ron Brown

**Cross-Lines Community Outreach: Winston's Story**

Midwest Health  
David Eulitt



44<sup>TH</sup> ANNUAL  
MID-AMERICA EMMY® AWARDS  
THE NOMINEES



## COMMERCIAL - SINGLE SPOT

### Kansas City Restaurant Week 2020

Proximity  
Chris Thompson, Matt Terwilliger, Joseph Pollock,  
Micah Blosser, Corey Dyer

### Diagnostic Imaging Centers - Time Machine

WDAF  
Taylor Mefford, Danielle Ray

### Love Letter to Springfield

Mercy Experience Studio  
Allan Smith, Joe Kelly, Amy White, Terry Kitzmiller,  
Angie Sucher, Pete Halliday, Meg Halski,  
Brant Hadfield, Joel Anderson, Mark Bartels,  
Derek Phillips

### Dreams Do Come True

Spot Content Studio  
Daniel Allen, Alvaro Aro, Sanford Mendelson

## COMMERCIAL - CAMPAIGN

### Mercy Cardiovascular | Strong Hearts

Mercy Experience Studio  
Joe Kelly, Allan Smith, Amy White, Terry Kitzmiller,  
Angie Sucher, Pete Halliday, Brant Hadfield,  
Derek Phillips, Jason Stamp, Mark Bartels,  
Joel Anderson

### Diagnostic Imaging Centers - Why Pay More

WDAF  
Danielle Ray, Taylor Mefford

### MyKC // Chris Goode, Ruby Jeans Juicery

Proximity  
Chris Thompson, Matt Terwilliger, Joseph Pollock,  
Micah Blosser, Oliver Hughes

### What Fatherhood Looks Like

Spot Content Studio  
Lauren Nieman, Alvaro Aro, Tim Kimberling,  
Jason Poole

### Rockhurst University - Change the World

Rockhurst University  
Dave Hunt, Nathan Kincaid, Trevor Hawkins

### Mercy Orthopedics - Strong Joints

Mercy Experience Studio  
Joe Kelly, Allan Smith, Amy White, Terry Kitzmiller,  
Pete Halliday, Angie Sucher, Joel Anderson,  
Mark Bartels, Brant Hadfield, Jason Stamp,  
Derek Phillips

## BREAKING NEWS

### Jefferson City Tornado

KSDK  
Abby Llorico, Casey Nolen, Chris Davi, Sara Machi

### Tornado Carves Devastating Path

KSHB  
Sean Hirshberg, Anna Carleton, Ryan Kraus,  
Gary Lezak, Jon Rehagen, Ariel Rothfield,  
Jordan Betts, Chris Morrison, Giovanni Garcia,  
Candi Laster

### The May 28<sup>th</sup> EF-4 Tornado

WDAF  
Michelle Bogowith, Karli Ritter, Joe Lauria,  
Garry Frank, Robert Zerwekh, Lindsey Adell,  
Shannon O'Brien, Dave D'Marko, Zac Summers

### You Need to Move Right NOW

KCTV  
Gary Amble, Erin Little, Collin Ulness, Ellen McNamara,  
Grady Reid, Nathan Vickers, Brett Anthony,  
Gregory Milota, Amy Anderson

### West Quincy Evacuates as Levee Fails

WGEM  
Chad Mahoney, Gary Davis

## BRANDED CONTENT PROGRAM - SHORT FORM (10 MINUTES OR LESS)

### UltraSite: Life's Intermissions

24Frames, Inc.  
Mark Wiemers

### Illinois Football Hype Video

JM Films  
Jon Morgan

### Cheers to 100

160over90  
Keith Kennedy, Daniel Stewart

### PT's Coffee: Finca Santa Maria in Colombia

Midwest Health  
David Eulitt

### The Science of Blues Hockey

Coolfire  
Dale Peluso, Sue Stanley, Jeff Keane,  
David Johnson, Jeremy Corray, Gina Trapani

### This is WashU Innovation

Spot Media Production Group  
Lauren Nieman, Alvaro Aro, Tim Kimberling,  
Jason Poole, Sanford Mendelson

## BRANDED CONTENT PROGRAM - LONG FORM (LONGER THAN 10 MINUTES)

### The Science of Healing

KMOV  
Dianne Casey, Daniel Martinez

### Laila: The Next Season

St. Louis Children's Hospital  
Travis Ulmer, Matt Collins, Tim Wilson, Megan Perez

### My KC

KCPT  
Cole Blaise, Matt Terwilliger, Joseph Pollock,  
Oliver Hughes, Chris Thompson, Micah Blosser

## NEWSCAST-EVENING 50-99

### Picking Up the Pieces

KY3/KSPR  
Andrea Brown

### Historic Flooding

KATV  
Nick Genty

## TALENT - ANCHOR - SPORTS

### KSHB

Mick Shaffer

### KYTV

Chad Plein





44<sup>TH</sup> ANNUAL  
MID-AMERICA EMMY® AWARDS  
THE NOMINEES



### SPORTS - NEWS SINGLE STORY

#### **Sportsmanship**

KSDK  
Frank Cusumano, Randy Schwentker

#### **Strongest Kid in the Weight Room**

KYTV  
Chad Plein

### SPORTS - NEWS FEATURE

#### **Smith-Cotton Quarterback Runs Challenge**

KMIZ  
Andrew Kauffman

#### **The Waterboy/Joe Porcelli**

KSDK  
Frank Cusumano, Bill Bennett

#### **Friendship Binds Star Quarterback**

KATV  
Kyle Deckelbaum

#### **Special: Treating Unordinary as Extraordinary**

KARK  
Nick Walters

#### **A Survivor's Story**

KNOE  
Aaron Dietrich

### SPORTS - PROGRAM FEATURE/ SEGMENT

#### **The Franchise: Divisional Round**

KC CHIEFS  
Dane Van Why, Luke Benna

#### **Against All Odds: The Story of JT Towers**

KARK  
Nick Walters

#### **Friday Night Fordyce**

Arkansas PBS  
Kevin Thomas Clark

### SPORTS - DAILY OR WEEKLY PROGRAM

#### **The Franchise**

KC CHIEFS  
Dane Van Why, Luke Benna

#### **Blues Pregame Stanley Cup Final**

Fox Sports Midwest  
Ed Bond, Mike Pyle, Gavin Bodell, Larry Mago

#### **Cardinals Live: Cards Clinch!**

Fox Sports Midwest  
Allen Stout, Bill Cochran, Larry Mago

### SPORTS - ONE TIME SPECIAL

#### **The Franchise: Super Bowl**

KC CHIEFS  
Dane Van Why, Luke Benna, John Mathews

#### **Celebration of the Negro Leagues**

WDAF  
Harold Kuntz

#### **Cardinals Live Pregame: Home Opener**

Fox Sports Midwest  
Timothy Trokey, Larry Mago, Bill Cochran

#### **Blues Season Preview Show**

Fox Sports Midwest  
Ed Bond, Christine Felt, Gavin Bodell, Larry Mago

### SPORTING EVENT/GAME - LIVE/UNEDITED

#### **Blues vs Jets Game Six**

Fox Sports Midwest  
John Kelly, Gavin Bodell, Larry Mago, Phil Mollica,  
Tim Pabst, Darren Pang

#### **Albert Pujols Returns to St. Louis**

Fox Sports Midwest  
Bryan Schapiro, Larry Mago, Bill Cochran

#### **Chiefs PreSeason**

KC CHIEFS  
Anna Tobkin, Brad Young, Evan Miller, Ryan Galvin,  
Andy Goldberg, Ari Wolfe, Trent Green, BJ Kissel,  
Rob Schmoll, Danna Doo

### SPORTS - INTERVIEW/ DISCUSSION

#### **Chiefs Field Pass - AFC Championship**

KC CHIEFS  
Anna Tobkin, BJ Kissel, Glenn Connelly, Shawn Barber,  
Matt McMullen, Mitch Holthus

#### **Reliving the Magic|Cardinals 1980's**

HEC-TV  
Victoria Babu, Christina Chastain, Jayne Ballew,  
Julie Winkle

### PROGRAM PROMO - SPORTS

#### **FOX4 - Super Bowl / Super Fans**

WDAF  
Taylor Mefford, Danielle Ray

#### **St. Louis Blues Stanley Cup Congrats**

Fox Sports Midwest  
Nathan Winkler

#### **60<sup>th</sup> Season Promo**

KC Chiefs  
Seth Tanner

### TALENT - SPORTS ANNOUNCER PLAY-BY-PLAY

#### **Fox Sports Midwest**

Dan McLaughlin



44<sup>TH</sup> ANNUAL  
MID-AMERICA EMMY® AWARDS  
THE NOMINEES



**RELIGION - NEWS STORY/  
PROGRAM FEATURE SEGMENT**

**Providing Comfort for the People of Juarez**

KTBS  
Luana Munoz

**Methodists in Arkansas Consider Plan**

KATV  
Alex Burch, Parker Eubanks, Tony Ranchino,  
Paden Moore, Ray Hamilton

**Priest Reunites With Dying Officer**

KTVI  
Jasmine Huda, Brian Ledford

**PUBLIC/CURRENT/  
COMMUNITY AFFAIRS -  
FEATURE/SEGMENT**

**Red Friday/Charity Game Initiative**

KC CHIEFS  
Matt McMullen

**The Onion House**

HEC-TV  
Julie Tristan

**PUBLIC/CURRENT/  
COMMUNITY AFFAIRS -  
PROGRAM/SPECIAL**

**The Blue River**

English Landing Films  
Michael Price

**Reel Midwest : Stateville Calling**

WILL  
Maurice Bresnahan, Ben Kolak

**Bleed Through**

KCPT  
Brad Austin

**Service Dogs of Distinction Special**

KHBS/KHOG  
Susan Searle, Miguel Medina

**Pujols Prom**

Coofire  
Steve Luebbert, AJ Meadows, Roxanne Lingua

**Chronicle: The Quinton Lucas Playbook**

KMBC  
Micheal Mahoney, Turner Twyman, Tim Twyman,  
Brett Elliott

**HEALTH/SCIENCE - NEWS  
SINGLE STORY**

**Dr Z Medical Marijuana**

KMOV  
Mark Hadler, Chris Nagus

**Alzheimer's Tortuous Journey**

KSHB  
Chase Lucas, Elizabeth Alex

**Hospital on Notice**

KYTV  
Ashleyn Reynolds

**An Epidemic: Violence Against Nurses**

WDAF  
Abby Eden, Lisa McCormick, Matt Kline, John Gerhards

**A Zookeeper's Fight to Survive**

KCTV  
Joe Chiodo, Jill Chadwick, Cliff Erwin,  
Jessica Lovell Carro

**Daniel's Smile**

KSDK  
Mike Bush, Tom Stasiak

**Mother Feeds Sons Bleach**

WDAF  
Dhomonique Ricks, Jon Haiduk

**HEALTH/SCIENCE - PROGRAM  
FEATURE SEGMENT**

**Midnight Scan Club**

HEC-TV  
Kathleen Berger

**Changing the World: Lan Yang**

HEC-TV  
Kathleen Berger, Peter Foggy

**HISTORIC/CULTURAL - NEWS  
SINGLE STORY/FEATURE**

**75 Years After Auschwitz Liberation**

KSHB  
Lindsay Shively, Rex Harris

**The North Little Rock Six**

KLRT  
Marc Gustafson, ReChelle Turner

**Dark Past**

WDAF  
John Holt, Jon Haiduk, Lisa McCormick

**HISTORIC/CULTURAL -  
PROGRAM FEATURE SEGMENT**

**Recipes for Respect**

HEC-TV  
Kathy Bratkowski, Peter Foggy

**Living St. Louis: VP Wedding**

Nine Network  
Jim Kirchherr, Brooke Butler

**Hazel Walker's Arkansas Travelers**

Arkansas PBS  
Charles Eric White

**Otis, The Temptations & The 60'S**

STL-TV  
Tim Lampley, Anthony Mueller

**HUMAN INTEREST - NEWS  
SINGLE STORY**

**A Survivor's Story**

KSLA  
Domonique Benn, DeWayne Kneipp

**Holly The Magnificent**

KSDK  
Frank Cusumano, Tom Stasiak

**SuEllen**

WDAF  
John Holt, Jon Haiduk, Lisa McCormick

**Secret Santa**

KMBC  
Turner Twyman, William Joy

**A Castle Built Out Of Love**

WHBF  
Tiffany Lundberg

**A Brand New Beat**

KSLA  
Doug Warner





44<sup>TH</sup> ANNUAL  
MID-AMERICA EMMY® AWARDS  
THE NOMINEES



**HUMAN INTEREST - PROGRAM/  
FEATURE SEGMENT**

**Surprise Squad - Todd Shelton's Story**

KMOV  
Brian Spencer, Tony Getts, Matt Chambers,  
Daniel Martinez, Brandon Bidwell, Sierra Hancock,  
Tom Ostertag, David Collins, Charles Delaney

**Reel Midwest: BT Lives in the Stitch**

WILL  
Maurice Bresnahan, Katie Prentiss Onsager

**Johnny Robinson's Boys Home**

KC CHIEFS  
Dane VanWhy, Luke Benna

**HUMAN INTEREST - PROGRAM/  
SPECIAL**

**Tackling Cancer**

Arkansas PBS  
LaShuan Vaughn, Tracy Prince, Charles Eric White

**Chronicle: DNA Discoveries**

KMBC  
Matt Flener, Whitney Blake Tyler, Cara Doyle Wright

**Greater St. Louis Honor Flight**

Mercy Experience Studio  
Joe Kelly, Allan Smith, Bill Zurheide

**Fans Remember the St. Louis Browns**

Nine Network  
Kara Vaninger, Ed Wheatley

**SOCIETAL CONCERNS - NEWS  
SINGLE STORY/PROGRAM  
FEATURE SEGMENT**

**96 Hour Hold**

KMOV  
Mark Hadler, Chris Nagus

**School Threats: Real Consequences**

WPSD  
Brianna Clark

**Sick in the Wrong State**

KCTV  
Angie Ricono, Casey Clark, Jason Crow, Greg Milota

**Rescuing Our Heroes**

KSLA  
Doug Warner

**We Remember**

HEC-TV  
Nancy Pasternak, Peter Foggy

**CRIME - NEWS SINGLE STORY -  
WITHIN 24 HOURS**

**Bus Driver Beating**

KTVI  
Mike Colombo, Brian Ledford

**She's Up There with Jesus**

KSDK  
Morgan Young

**Comic Book Caper**

KSDK  
Brandon Merano

**CRIME - NEWS SINGLE STORY/  
SERIES - NO TIME LIMIT**

**Fighting for Fawn**

KCTV  
Angie Ricono, Ken Ullery, Casey Clark, Greg Milota

**The Hunt for Brian Freeman**

KLRT  
Kevin Kelly, Marc Gustafson

**COMMUNITY - KC Mothers in Charge**

KMBC  
Cody Holyoke

**Moonlighting Cops**

KSDK  
Jacob Long, Andy Broadway

**NEWS SPECIAL**

**Community Under Fire: Search For Solutions**

KOMU  
Jeimmie Nevalga, Emily Spain, Ryan Takeo,  
Jacob Cavaiani, Annie Ochitwa, Rosemond Crown,  
Diana Fidarova, Jim Rieik, Spencer Humphrey,  
Marcelle Peters

**Project Illinois: Justice for Ta'naja**

WICS  
Michael Truett, Kelsey Mullins, William Hatfield,  
Ana Espinosa, Christopher Losada, Justin Carter

**Bloodshed**

WAND  
Joseph Astrouski, Morgan Schaab

**Open Mike, Mike Shannon**

KSDK  
Andy Mohler, Bill Bennett, Tony Chambers

**Duck Boat Tragedy - Taken by Storm**

KOLR  
Robert Jehle, David Oliver, Joe Murano, Elisa Raffa

**After the Crime Scene Clears**

WDAF  
Megan Dillard, Jon Haiduk,  
Cherie Congour-Leatherwood



44<sup>TH</sup> ANNUAL  
MID-AMERICA EMMY® AWARDS  
THE NOMINEES

ACKNOWLEDGEMENTS



NEWSCAST-EVENING 1-49

**Stormy Blues Game Night**

KSDK  
Suzanne Herman, Andrea Firestone

**Surviving the Storm**

KMBC  
Kindle Biermann

**Tornado Emergency: "It Was Alive"**

KMBC  
Ciera Lundgren

**KCTV5 10PM - Linwood Aftermath**

KCTV  
Ronald Hawkins, Collin Ulness, Elliot Metz,  
Ellen McNamara, Andrew Zimmerman, Gary Amble

NEWS EXCELLENCE

**KSHB**

Matthew Waggoner

**KSDK**

Carol Fowler

**KCTV**

Casey Clark

**KMBC**

Dan O'Donnell

**KATV**

Nick Genty

OVERALL EXCELLENCE

**KSDK**

Alicia Elsner

**KMBC**

Sarah Smith

**Best of 65TPT Productions**

KC CHIEFS  
Mike Cukyne

OUR GRATITUDE &  
EXTRA APPLAUSE TO:

**MAGGIE EUBANKS,**

EXECUTIVE DIRECTOR, NATAS MID-AMERICA

**TOM ROGERS,**

GALA EXECUTIVE PRODUCER

**BRIAN HOLDER,** SHOW EDITOR

**BILL CONERLY,** POWERPOINT

**AVATAR STUDIOS**

**FRONTERA INTERACTIVE**

**LISA ROSE,** KY3 NEWS

**DANIEL POSEY,** KY3 PROMOTIONS

**NICK SIBLEY MUSIC,** SPRINGFIELD, MO

**VANDIVORT HOTEL,** SPRINGFIELD, MO  
HOTELVANDIVORT.COM

**WASHINGTON THEATER,** QUINCY, IL

**WADE CLARK AND BOXCAST**





*See you in*  
2021